

TABLE 1 FILTER WIRING CHART

FILTER MANUFACTURER	INPUT TERMINALS	OUTPUT TERMINALS	MFR OPTION CODE(S)	x.xx	y.yy
ARTECHE	1=U, 2=V, 3=W	4=X, 5=Y, 6=Z	BY	3.07	3.07
TCI	1=A1, 2=B1, 3=C1	4=T1, 5=T2, 6=T3	C or F	3.17	3.17
MIRUS	1=A1, 2=B1, 3=C1	4=A2, 5=B2, 6=C2	CONT-600-B6-E	3.27	3.27
MTE	1=U1, 2=V1, 3=W1	4=U2, 5=V2, 6=W2	012	4.18	4.18
MTE	1=U1, 2=V1, 3=W1	4=U2, 5=V2, 6=W2	013	4.10	4.10

WIRES x.xx & y.yy ONLY REQUIRED IF MFR OPTION CODE NOTED ABOVE IS ORDERED BY THE CUSTOMER.

NOTES:

- CONNECTED TO THE CABINET. CUSTOMER TO CONNECT THE CABINET GROUND LUGS TO EARTH GROUND AND UTILITY GROUND.
- CONDUIT FITTINGS/HUBS SHALL COMPLY WITH THE STANDARD FOR CONDUIT, TUBING, AND CABLE FITTINGS, UL 514B. OR CONDUIT FITTINGS HAVING THE SAME ENVIRONMENTAL RATING AS THE ENCLOSURE SHALL BE USED.
- LIGHTNING PROTECTION OPTION P2 IS TO BE INSTALLED ON THE VOLTAGE TAP OFFS AT THE BREAKER IF REQUIRED.
- BRANCH CIRCUIT PROTECTION TO BE SUPPLIED BY THE CUSTOMER WHEN NOTED ON THE CABINET DATA NAMEPLATE.
- INSULATED TWISTED SHIELDED WIRE IS REQUIRED. SHIELD TO CONNECT TO PROPER TERMINALS AS SHOWN. CONNECT THE SHIELD ONLY AT THIS END, STUB AND ISOLATE THE OTHER END. DO NOT RUN THESE WIRES IN THE SAME CONDUIT AS THE AC POWER AND AC CONTROL WIRES. KEEP ALL WIRING UNDER 50m IN LENGTH.
- CUSTOMER TO ADJUST THE THERMOSTAT ON THE SPACE HEATER HR1 FOR THE MINIMUM DESIRED TEMPERATURE INSIDE THE DRIVE CABINET. THIS SET TEMPERATURE IS NORMALLY SELECTED TO BE SLIGHTLY HIGHER THAN THE MINIMUM AMBIENT TEMPERATURE OF THE AIR SURROUNDING THE CABINET, AND IS THE TEMPERATURE AT WHICH THE SPACE HEATER HR1 WILL SHUT OFF.
- FOR A CONTROL TRANSFORMER T1 POWER RATING OF 350VA OR GREATER, SECONDARY FUSE F6 IS ADDED.
- IF AC MOTOR IS FURNISHED WITH A N.C. THERMAL SWITCH THEN SET DRIVE PARAMETER H1-08 TO 27. THIS WILL CAUSE THE DRIVE TO COAST TO STOP UPON AN AC MOTOR THERMAL FAULT.
- ALONG WITH THIS, ADD THE FOLLOWING CUSTOMER WIRING: WIRE THE N.C. THERMAL SWITCH BETWEEN TERMINAL S8 OF THE 120VAC INTERFACE CARD AND ONE SIDE OF THE 120VAC SOURCE.
- OPTIONS TD, TG, TH, TJ, TL, TO OR TU CONTROL (SEE UDE00436 FOR MORE INFORMATION)
- CUSTOMER TO REPLACE THE JUMPER WITH NORMALLY CLOSED SAFETY INTERLOCKS, IF APPLICABLE.
- CUSTOMER MUST PROVIDE PROPER SHORT CIRCUIT PROTECTION AND MEANS OF DISCONNECT.

SEE DRAWING UDE00434 FOR CUSTOMER CONNECTION TABLES.

SEE DRAWING UDE00436 FOR DRIVE PARAMETER SETTINGS.

* -- INDICATES COMPONENTS NOT SUPPLIED BY YASKAWA.

-- INDICATES CUSTOMER WIRING.



THIS DOCUMENT AND INFORMATION CONTAINED HEREIN IS CONFIDENTIAL AND CANNOT BE COPIED OR DISCLOSED IN WHOLE OR IN PART WITHOUT THE EXPRESS WRITTEN CONSENT OF YASKAWA AMERICA, INC.

REV.	DESCRIPTION	ECO #	DRAWN BY	DATE
05	ADD REV NUMBER TO PAGE 4	9477	NSL	03/25/19
04	ADD KS TO HOA WIT6 & SERIAL COMMS	7217	MDK	06/29/16

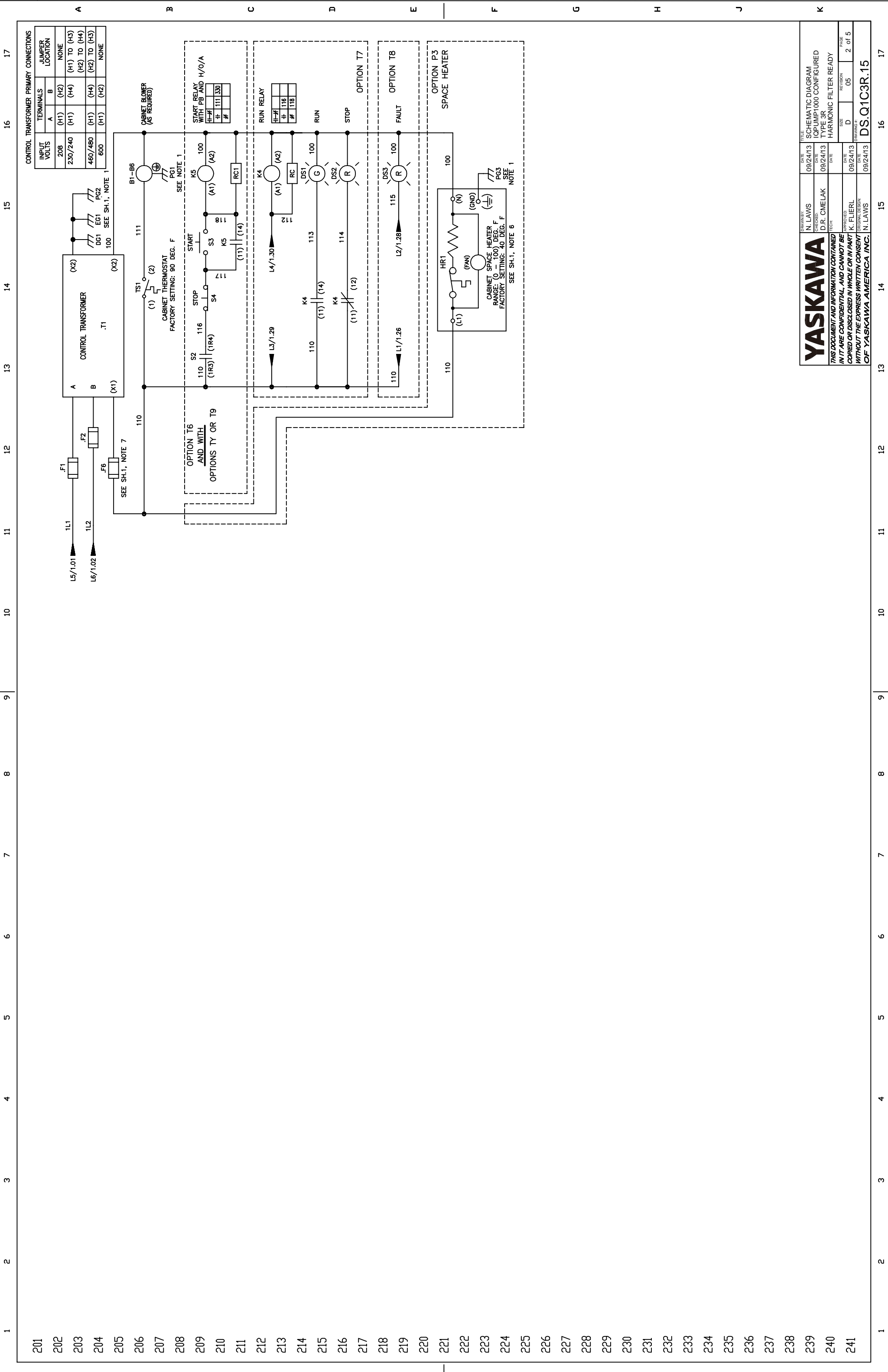
REV.	DESCRIPTION	ECO #	DRAWN BY	DATE
05	ADD REV NUMBER TO PAGE 4	9477	NSL	03/25/19
04	ADD KS TO HOA WIT6 & SERIAL COMMS	7217	MDK	06/29/16

REVISIONS

DATE	BY	REVISION	SIZE	PAGE
09/24/13	N. LAWS	05	D	1 of 5
09/24/13	D.R. OMELEK	05	D	1 of 5
09/24/13	K. FLIERL	05	D	1 of 5
09/24/13	N. LAWS	05	D	1 of 5

TITLE: SCHEMATIC DIAGRAM
 IQPUMP1000 CONFIGURED
 TYPE 3R
 HARMONIC FILTER READY

DRAWING # DS.Q1C3R.15



201
202
203
204
205
206
207
208
209
210
211
212
213
214
215
216
217
218
219
220
221
222
223
224
225
226
227
228
229
230
231
232
233
234
235
236
237
238
239
240
241

A
B
C
D
E
F
G
H
J
K

CONTROL TRANSFORMER PRIMARY CONNECTIONS

INPUT VOLTS	TERMINALS		JUMPER LOCATION
	A	B	
208	(H1)	(H2)	NONE
230/240	(H1)	(H4)	(H1) TO (H3) (H2) TO (H4)
480/480	(H1)	(H4)	(H2) TO (H3)
600	(H1)	(H2)	NONE

YASKAWA

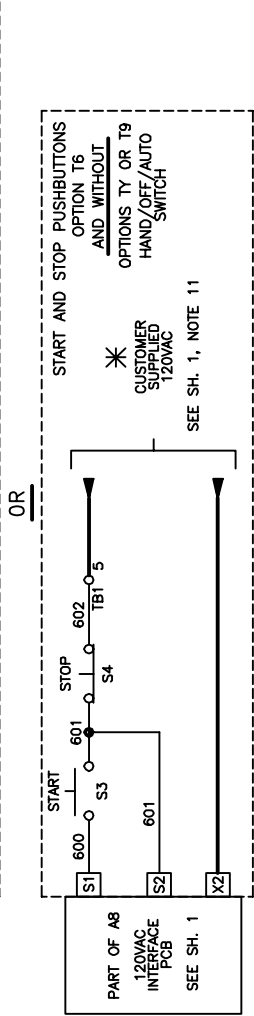
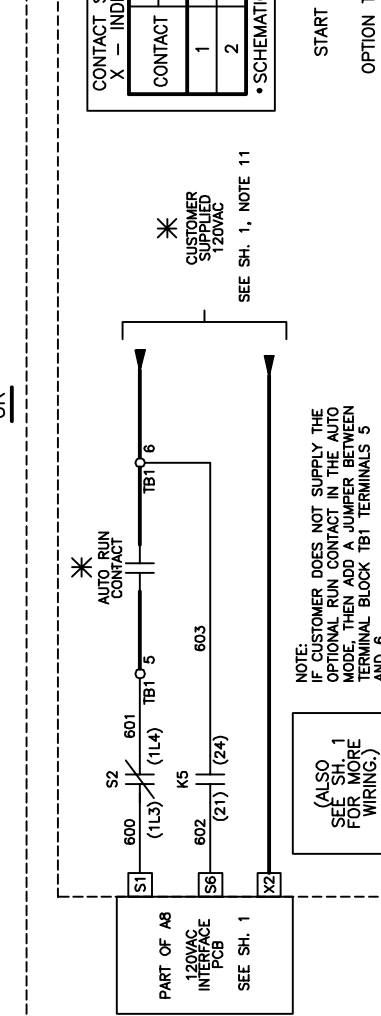
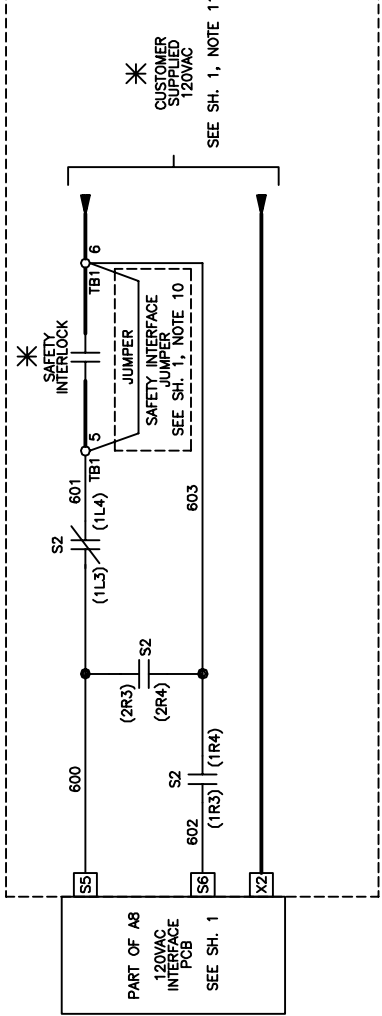
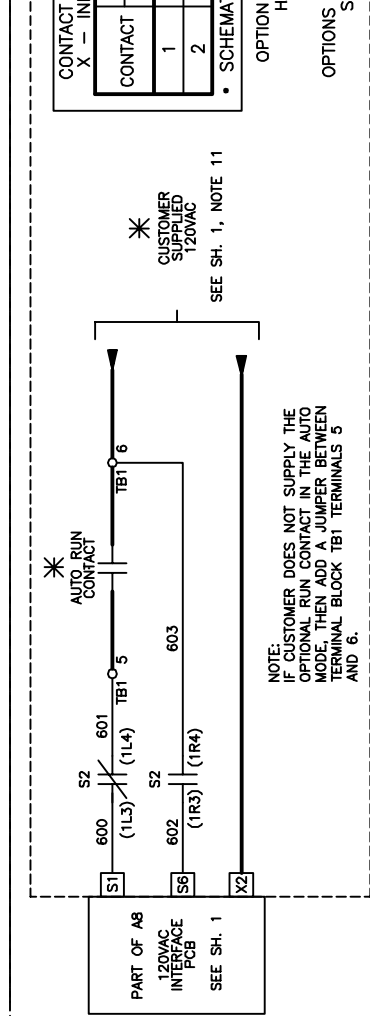
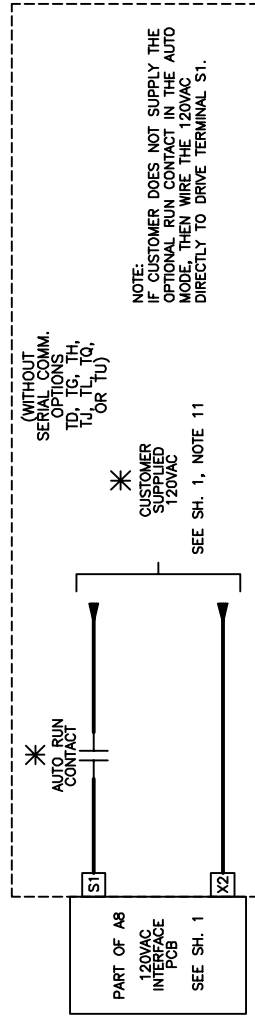
THIS DOCUMENT AND INFORMATION CONTAINED
HEREIN ARE CONFIDENTIAL AND CANNOT BE
REPRODUCED OR DISCLOSED IN WHOLE OR IN PART
WITHOUT THE EXPRESS WRITTEN CONSENT
OF YASKAWA AMERICA, INC.

DATE	TITLE
09/24/13	SCHEMATIC DIAGRAM
09/24/13	TOPUMP1000 CONFIGURED
09/24/13	TYPE 3R
09/24/13	HARMONIC FILTER READY

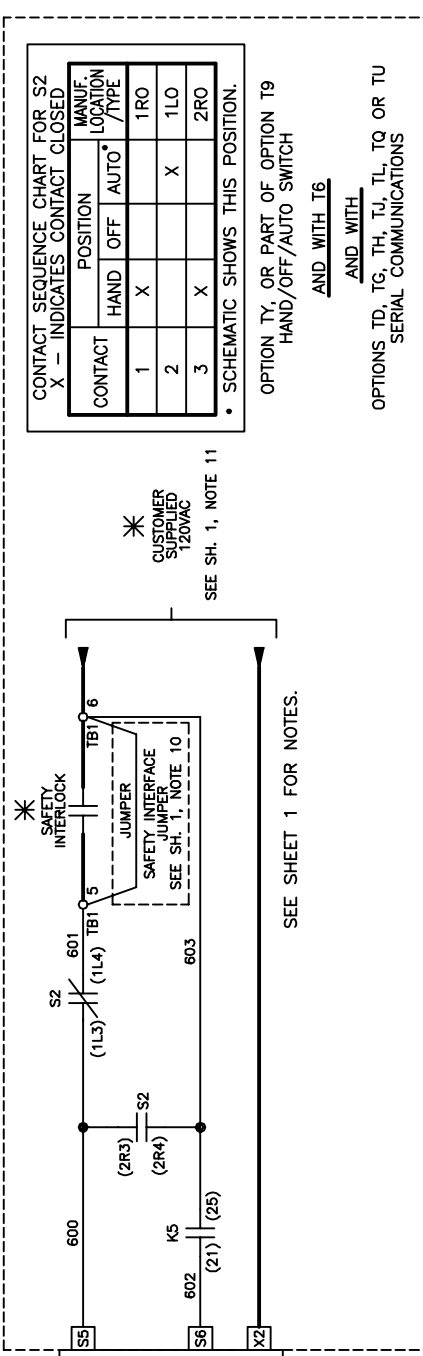
DATE	APPROVED BY	DATE	REVISION	SIZE	PAGE
09/24/13	K. FLIERL	09/24/13	05	D	2 of 5
09/24/13	N. LAWS	09/24/13	05	D	2 of 5

DS.Q1C3R.15

RUN/STOP CONTROL WITH OPTION TV (FROM SHEET 1)



FOR ALL WIRE CONNECTION TO 120VAC INTERFACE PCB A8:
WIRE RANGE: (24 - 17) AWG.
WIRE TORQUE: (1.95 - 2.21) LB.-IN



YASKAWA
THIS DOCUMENT AND INFORMATION CONTAINED IN IT ARE CONFIDENTIAL AND CANNOT BE COPIED OR DISCLOSED IN WHOLE OR IN PART WITHOUT THE EXPRESS WRITTEN CONSENT OF YASKAWA AMERICA, INC.

DATE	REVISION	SIZE	REVISION	PAGE
09/24/13	05	D	05	3 of 5
09/24/13	05	D	05	3 of 5

DRAWN BY: N. LAWS
CHECKED: D.R. CMELAK
TECH: K. FLIERL
APPROVED: N. LAWS
DATE: 09/24/13
DATE: 09/24/13
DATE: 09/24/13
DATE: 09/24/13
TITLE: SCHEMATIC DIAGRAM
TOPJUMP1000 CONFIGURED
TYPE 3R
HARMONIC FILTER READY
DRAWING # DS.Q1C3R.15

TABLE 2a ARTECHE FILTER SELECTION TABLE

BASE IQPUMP 1000 MODEL NO.	CIMR-PW440	CURRENT	ARTECHE LPE SERIES HARMONIC FILTER
Q1C3B034	038	34	LPF 0048 480 K_ *** 65KASCCR LG ##
Q1C3B040	044	40	LPF 0048 480 K_ *** 65KASCCR LG ##

WHERE *** = NT, N3R, or OPN; WHERE ## = BY or is blank; and _ = B or S

TABLE 2b TCI FILTER SELECTION TABLE

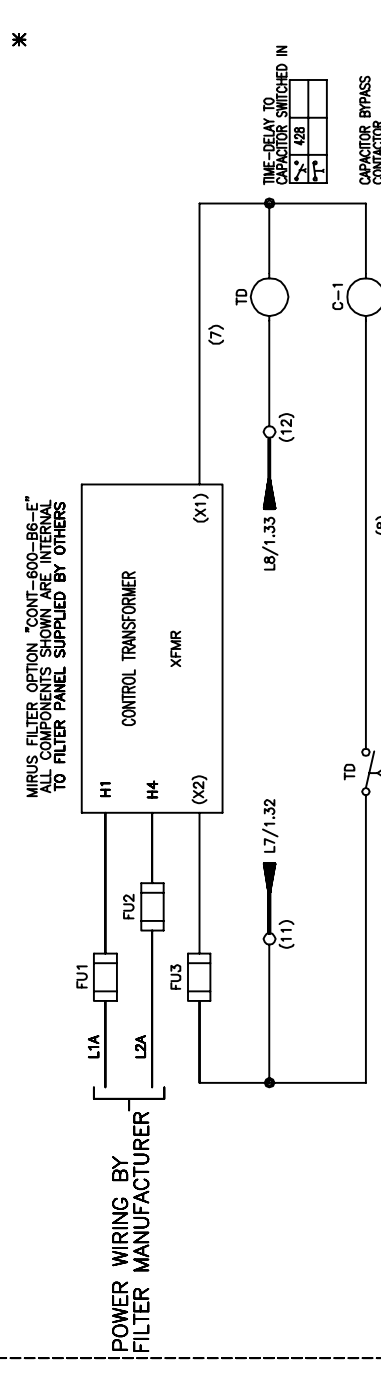
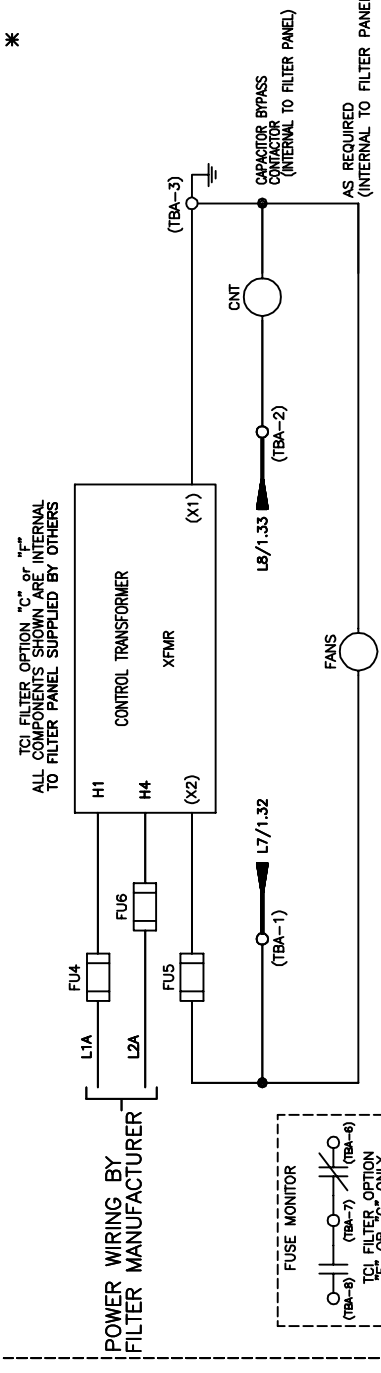
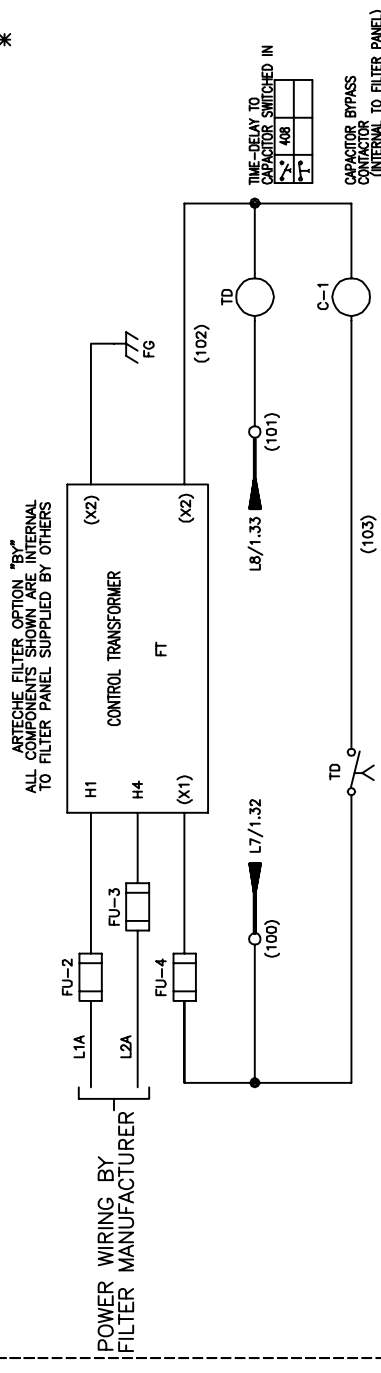
BASE IQPUMP 1000 MODEL NO.	CIMR-PW440	CURRENT	TCI HGP SERIES HARMONIC FILTER
Q1C3B034	038	34	HGP0030AWH00080
Q1C3B040	044	40	HGP0040AWH00080

WHERE ! = 0, 1, or 3; WHERE @ = S, C, F, or G; and \$ = 0 or 1

TABLE 2c MIRUS FILTER SELECTION TABLE

BASE IQPUMP 1000 MODEL NO.	CIMR-PW440	CURRENT	MIRUS LINEATOR SERIES HARMONIC FILTER
Q1C3B034	038	34	AUHF-40-480-60-D-\$\$\$-+
Q1C3B040	044	40	AUHF-50-480-60-D-\$\$\$-+

WHERE \$\$\$ = EO, EOP, EOM, or E1 and + = E, HP, ED, MD, TA, TB, TC, CONT-600-B6-E, HMIP, HMIM, 5P, 8P, or is Blank



SEE SHEET 1 FOR NOTES.

YASKAWA		DATE	09/24/13	TITLE	SCHEMATIC DIAGRAM
DRAWN BY	N. LAWS	DATE	09/24/13	TYPE 3R	IQPUMP1000 CONFIGURED
CHECKED	D.R. CMELAK	DATE	09/24/13	HARMONIC FILTER READY	
TECH		DATE			
APPROVED	K. FLIERL	DATE		SIZE	D
BY		DATE		REVISION	05
DATE		DATE		DRAWING #	4 of 5
					DS.Q1C3R.15

THIS PAGE FOR CUSTOMER USE ONLY

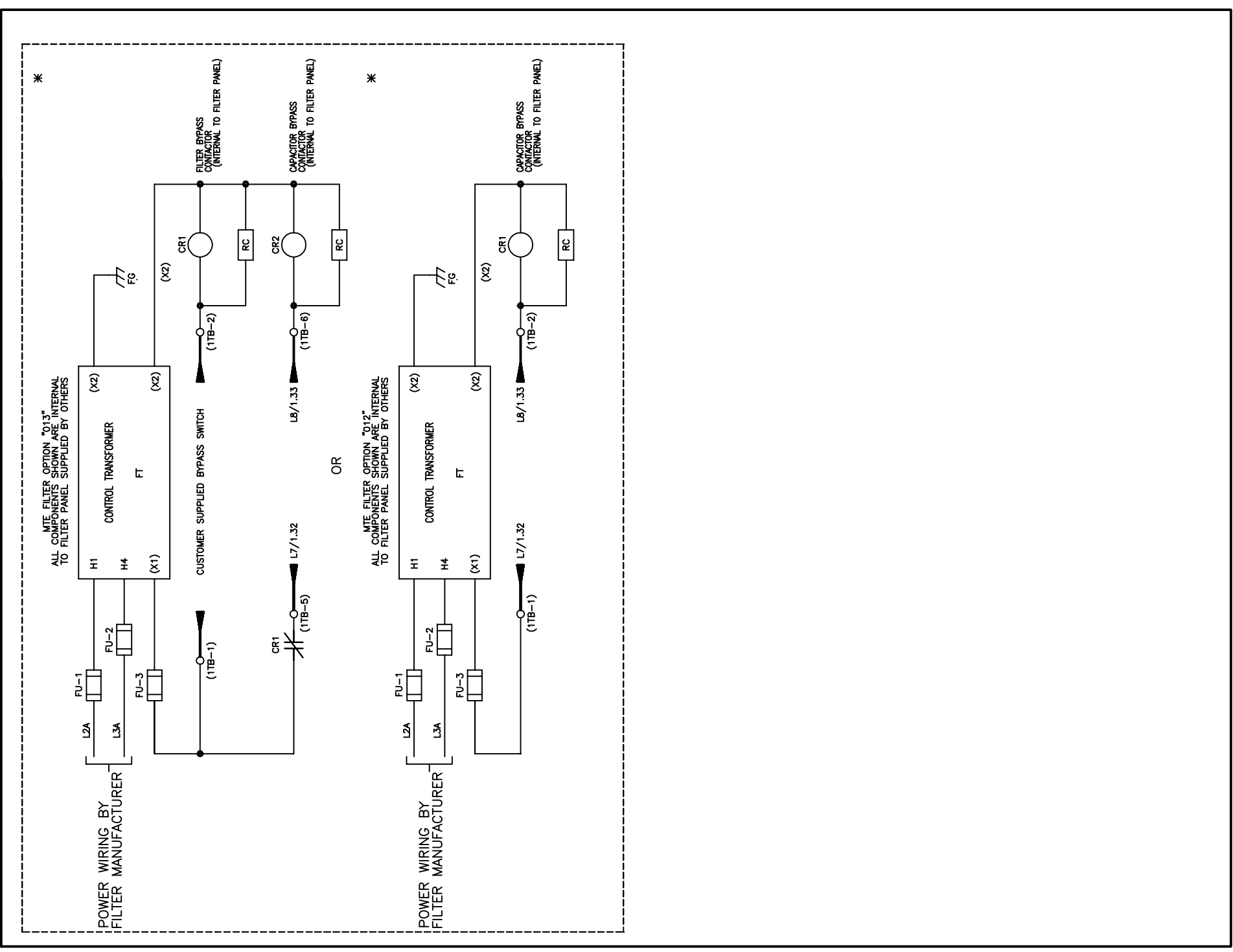


TABLE 2d MTE FILTER SELECTION TABLE

BASE IQPUMP 1000 MODEL NO.	CIMR-PW4A0	CURRENT	MTE MAP SERIES HARMONIC FILTER
Q1C3B034	038	34	MAPR0044D~~~
Q1C3B040	044	40	MAPR0052D~~~

WHERE * = P, G, or W and WHERE ~~~ = 002, 008, 012, 013, 400, or is blank

SEE SHEET 1 FOR NOTES.



THIS DOCUMENT AND INFORMATION CONTAINED HEREIN IS CONFIDENTIAL AND NOT TO BE REPRODUCED OR DISCLOSED IN WHOLE OR IN PART WITHOUT THE EXPRESS WRITTEN CONSENT OF YASKAWA AMERICA, INC.

DATE	DATE	DATE	DATE	DATE	DATE	DATE
09/24/13	09/24/13	09/24/13	09/24/13	09/24/13	09/24/13	09/24/13
N. LAWS	N. LAWS	D.R. CMELAK	K. FLIERL	N. LAWS		
CREATED	APPROVED	TECH	APPROVED	DESIGNED		
DRAWN BY			CHECKED			DATE
N. LAWS			D.R. CMELAK			09/24/13
TITLE			SHEMATIC DIAGRAM			05
IQPUMP1000 CONFIGURED			TYPE 3R			05
HARMONIC FILTER READY			HARMONIC FILTER READY			5 of 5
DRAWING #			DRAWING #			DS.Q1CR.15

THIS PAGE FOR CUSTOMER USE ONLY